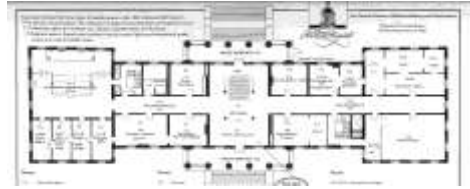


# Scavenger Hunt



<b>Objectives &amp; Purpose:</b>	Students will explore the exhibit rooms and use visual recognition skills to identify artifacts. Student will learn about the three branches of government, the Historic Capitol building, the Cabinet and the people who worked here in 1902.
<b>Description:</b>	Young children will enjoy finding some of our interesting and unusual artifacts throughout two floors of exhibits. Items include: "Walkin' Lawton" Chiles' shoes, flintlock musket, Spanish Mission Bell, carpetbag and Seminole Indian doll. This fun program is appropriate as a family or grade-school group activity. The scavenger hunt is part of an activity guide which includes several educational activities about the Historic Capitol.

<b>Audience:</b>	Grades pre-school-4th
<b>Cost:</b>	Free
<b>Limit:</b>	50 participants
<b>Location:</b>	In-house
<b>Program time:</b>	20-30 minutes
<b>Schedule Times:</b>	Ask for Activity Book at reception desk. Groups should call ahead to request an Activity Book for each student.
<b>Sunshine State Standards:</b>	This program correlates with Sunshine State Standards for grades K-4.
<b>Subject:</b>	Science, Social Studies, History, Civic Government



# SCAVENGER HUNT- SUNSHINE STATE STANDARDS

## Kindergarten

SC.K.N.1.1: Collaborate with a partner to collect information.

SC.K.N.1.3: Keep records as appropriate -- such as pictorial records -- of investigations conducted.

SC.K.N.1.5: Recognize that learning can come from careful observation.

## First Grade

SS.1.A.2.1: Understand history tells the story of people and events of other times and places.

SS.1.A.2.2: Compare life now with life in the past.

SC.1.N.1.3: Keep records as appropriate - such as pictorial and written records - of investigations conducted.

## Second Grade

SS.2.C.3.2: Recognize symbols, individuals, events, and documents that represent the United States.

## Third Grade

SS.3.G.4.4: Identify contributions from various ethnic groups to the United States.

SC.3.N.1.3: Keep records as appropriate, such as pictorial, written, or simple charts and graphs, of investigations conducted.

SC.3.N.1.6: Infer based on observation.

## Fourth Grade

SS.4.A.6.3: Describe the contributions of significant individuals to Florida.

SC.4.N.1.5: Compare the methods and results of investigations done by other classmates.

